

Location Map



Kasturi
HEIGHTS
PREMIUM FLATS AT LAMBAKHEDA

Project by-


Kartik Devcon
PRIVATE LIMITED

Corporate Off.: 63, First Floor, Zone-I, M.P. Nagar
(Near Hotel Shri Vatika), Bhopal, Ph.: 0755-4241999
Site off.: Lambakheda, Berasia Road, Bhopal
Call : +91 98267 44499, 98263 55599, 98264 66699, 98263 77799
E-mail : kartikdevcon@gmail.com Website : www.kartikdevcon.com

Architects -
S.S. & Associates
Architects & Engineers
H/2, Second Floor, Kamdhenu Complex,
196, Zone-I, M.P. Nagar, Bhopal
Ph.: 0755-4273776
e-mail : ssandassociates04@gmail.com

www.premiergroup.com

An opportunity to
experience opulent lifestyle...

Kasturi
HEIGHTS
PREMIUM FLATS AT LAMBAKHEDA



This brochure is purely conceptual & not a legal offering. All visual photographs used in this brochure are artists impressions. All specifications, sizes & layout etc. are tentative & subject to such variations, additions, modifications as decided by the Architects or by the Promoters.

Kasturi
HEIGHTS
PREMIUM PLATS AT LAMBAKHEDA

PREMIUM ABODES
AT A PRIME LOCATION



FEATURES

- Round-the-clock security
- CCTV Surveillance system in common areas.
- Grand entrance gate with guard room.
- Well equipped Children's park
- Landscaped garden.
- Clubhouse with Indoor games.
- Hi-tech gymnasium & yoga centre.

- Water supply through sumpwell.
- Elevator with power backup.
- Wide RCC roads.
- Ample parking space.
- Modern disposal system.
- Rain water harvesting.
- Temple within the campus.



Limitless luxury
just for a limited few

You would have dreamt of such a home that is elegant, exclusive, extremely luxurious and full of all comforts and amenities. Now, stop dreaming and rush to own it because your dream comes true now with Kasturi Heights. Kasturi Heights, an ultra-modern project that comprises only 120 ultra-luxurious apartments. Hence, it's a limited opportunity for a very few who truly don't want to wait to be in their dream home, anymore.

2BHK TYPE - A

Super Built up Area - 1081 sq.ft.



2BHK TYPE - B

Super Built up Area - 1059 sq.ft.



2BHK TYPE - C
Super Built up Area - 1001 sq.ft.

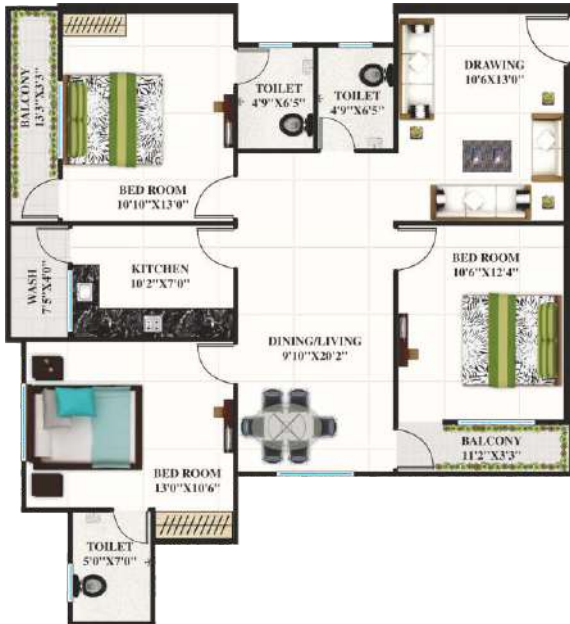


3BHK TYPE - A
Super Built up Area - 1425 sq.ft.



3BHK TYPE - B

Super Built up Area - 1410 sq.ft.



Specifications

Structure - R.C.C. Framed structure.

Walls - Walls 4" thick. Plastered and painted with oil bound distemper from inside and Ace / Apex or equivalent from outside.

Flooring - Vitrified tiles 2'0" x 2'0" Anti-skid ceramic tiles in Toilet & Balcony.

Toilets - Ceramic tile Dado up to 7'0" height. White sanitary ware with chromium plated fittings.

Kitchen - Granite counter with dado of ceramic tiles up to 2'0" height stainless steel sink.

Door Frame - Pressed Steel Door Frames.

Door Panel - Flush Door.

Window - Powder Coated aluminum section with M.S. grill.

Wiring & circuits - Complete copper wiring, all circuits protected by MCB's.

Outlets - POP in drawing area. Adequate number of electrical outlets. TV & AC point in drawing room & master bedroom.

WATER SUPPLY - Water supply through sump well & individual water tanks on roof top.